



SAILING INSTRUCTIONS – OPEN FLEETS

ARK REGATTA

July 8-9, 2017

Bedford Basin Yacht Club
377 Shore Drive, Bedford, NS B4A 2E7
Ph: 902.835.3729
www.bbyc.ca

Organizing Authority: Bedford Basin Yacht Club

1 RULES

- 1.1 The regatta will be governed by the rules as defined in The Racing Rules of Sailing.
- 1.2 RRS 40 is changed as follows: Competitors shall wear approved personal flotation devices at all times while afloat. BBYC's marina is comprised of a series of floating docks. This changes the Part 4 Preamble.
- 1.3 For Optimists, RRS 61.1(a)(2) is deleted and replaced as follows: All boats shall be required to display a red flag.

2 NOTICES TO COMPETITORS

Notices to competitors will be posted on the official notice board located in the windows of the BBYC clubhouse facing the ground-level deck.

3 CHANGES TO SAILING INSTRUCTIONS

Any change to the sailing instructions will be posted before 0900 on the day it will take effect, except that any change to the schedule of races will be posted by 2000 on the day before it will take effect.

HALIFAX

The **BINNACLE**
binnacle.com





4 SIGNALS MADE ASHORE

- 4.1 Signals made ashore will be displayed on the mast at the BBYC clubhouse.
- 4.2 Signals made ashore over a course flag ~~only~~ apply to that course only.
- 4.3 When code flag AP is displayed ashore, '1 minute' is replaced with 'not less than 60 minutes' in race signal AP. This changes race signal AP.
- 4.4 Code flag L with one sound signal means a notice to competitors has been posted on the official notice board.

5 SCHEDULE OF RACES

- 5.1 Racing will be held July 8 and 9, 2017.
- 5.2 The skippers meeting is scheduled for 1015h on the lower deck on 8 July 2017.
- 5.3 The scheduled time of the warning signal for the first race on both days is 1100h.
- 5.4 On any given day, the race committee (RC) shall run any number of races appropriate for the weather conditions, to a maximum of 8 for all fleets except blue/white/red Optimists, for whom the maximum is 10. All races after the first race of the day will be started as soon as is practical after the conclusion of the preceding race.
- 5.5 On the last day of the regatta no initial warning signal will be made after 1530h.

6 RACING AREAS

Appendix A shows the location of racing areas.

7 THE COURSES AND CLASS FLAGS

- 7.1 The diagrams in Appendix B show the courses, including the approximate angles between legs, the order in which marks are to be passed, and the side on which each mark is to be left.
- 7.2 Course assignments and class flags are:

CLASS	COURSE	CLASS FLAG
29er	Alpha	White Flag with Red Class Insignia
Laser	Alpha	White flag with Red Class Insignia
Laser Radial	Alpha	Red Flag with White Class Insignia

CLASS	COURSE	CLASS FLAG
Club 420	Bravo	White Flag with Blue Class Insignia
International 420	Bravo	Pink Flag
Optimist	Bravo	White Flag with Blue Class Insignia

HALIFAX

The **BINNACLE**
binnacle.com





8 MARKS

- 8.1 For the long course, original mark 1 will be an inflated orange tetrahedron (29ers / 420s)
- 8.2 For the short course, original mark 1 will be an inflated yellow tetrahedron (Lasers / Optis)
- 8.3 Original mark 2 will be inflated yellow tetrahedra for all classes
- 8.4 The start/finish marks will be yellow inflatable pins.
- 8.5 New marks, as provided in instruction 10.1, will be in a contrasting colour to the original mark.
- 8.6 Protection Marks that may be positioned astern of the RC Signal Boats will be marks of the course. Competitors shall not pass between the Protection Marks and the RC Signal Boats.

9 THE START

- 9.1 Races shall be started by using RRS 26 with the warning signal made 5 minutes before the starting signal.
- 9.2 All categories (e.g.: open, under 16, masters) within a class shall start together.
- 9.3 The starting line shall be between a mast or staff displaying an orange flag on the race committee signal boat at the starboard end and the course side of the port-end starting mark.
- 9.4 Boats whose warning signal has not been made shall avoid the starting area during the starting sequence for other races. The starting area is defined as that area within 50 metres of the start line. Failure to comply may result in a penalty at the discretion of the protest committee.
- 9.5 A boat starting later than 4 minutes after her starting signal will be scored Did Not Start without a hearing. This changes rules A4 and A5.

10 CHANGE OF THE NEXT LEG OF THE COURSE

- 10.1 To change the next leg of the course, the RC will lay a 'new' mark (or move the finishing line) and remove the original mark as soon as practicable. When in a subsequent change a 'new' mark is replaced, it will be replaced by an original mark.
- 10.2 Boats shall pass between the RC boat signalling the change of the next leg and the nearby mark, leaving the mark to port and the race committee boat to starboard. This changes RRS 28.1.

11 THE FINISH

- 11.1 The finishing line shall be between the mast or staff displaying the orange flag on a race committee boat and the course side of the finish mark.

HALIFAX

The **BINNACLE**
binnacle.com

★ ★ ★ ★
ATLANTICA
HOTELS
WWW.ATLANTICA.TRAVEL


COTTON CANDY


Clearwater


MARTOCK


**SCOTION
SAILS**



12 PENALTY SYSTEM

- 12.1. Appendix P is in effect, except that rule P2.3 is deleted and rule P2.2 is changed so that it will apply to any penalty after the first.
- 12.2. In addition to their role under Appendix P, jury members may blow a whistle when they see what they observe to be a breach of a rule of Part 2. No sail number shall be hailed. If no penalty turns are done the jury may protest one or more boats.
- 12.3. Action or non-action by the Protest Committee under Instruction 12.2 shall not be grounds for redress.
- 12.4. Penalties for breaking a rule other than the rules of RRS Part 2, Rule 31 or Rule 42 will be determined by the Protest Committee. This changes Rule 64.1(a). The scoring abbreviation for a penalty imposed under this instruction will be DPI.

13 TIME LIMIT and TARGET TIMES

- 13.1 Time limits and target times are as follows:

<i>Class</i>	<i>Mark 1 Time Limit</i>	<i>Race Time Limit</i>	<i>Target Time</i>
<i>29er</i>	<i>20 minutes</i>	<i>60 minutes</i>	<i>35 minutes</i>
<i>Laser</i>	<i>20 minutes</i>	<i>60 minutes</i>	<i>40 minutes</i>
<i>Laser Radial</i>	<i>20 minutes</i>	<i>60 minutes</i>	<i>40 minutes</i>
<i>Club 420</i>	<i>20 minutes</i>	<i>60 minutes</i>	<i>40 minutes</i>
<i>International 420</i>	<i>20 minutes</i>	<i>60 minutes</i>	<i>40 minutes</i>
<i>Optimist Open</i>	<i>30 minutes</i>	<i>60 minutes</i>	<i>40 minutes</i>

- 13.2 If no boat has passed Mark 1 within the Mark 1 time limit the race shall be abandoned. Failure to meet the target time shall not be grounds for redress. This changes rule 62.1(a).
- 13.3 Boats failing to finish within 20 minutes after the first boat sails the course and finishes will be scored Did Not Finish (DNF) without a hearing. When it is in the best interests of the fleet and its competitors, the Race Committee may award finishing places to boats that are delaying the finish of the race. Finishing positions will be awarded based on the current position of boats and they will be designated OCF, the scoring abbreviation for an on-course finish. This changes rules 28.1, 35, A4, A5, and A11.

HALIFAX

The **BINNACLE**
binnacle.com





14 PROTESTS AND REQUESTS FOR REDRESS

- 14.1 Protest forms are available at the Registration Desk in the upstairs wardroom. Protests and requests for redress or reopening shall be delivered there within the appropriate time limit.
- 14.2 For each class, the protest time limit is 60 minutes after the RC Signal boat has docked.
- 14.3 Notices will be posted no later than 30 minutes after the protest time limit to inform competitors of hearings in which they are parties or named as witnesses. Hearings will be held in the protest room, whose location will be identified on the official Notice Board, beginning at the time posted.
- 14.4 Notices of protests by the race committee or protest committee will be posted to inform boats under rule 61.1(b).
- 14.5 Race committee will post a summary of race committee actions on the official notice board upon docking each day.
- 14.6 Scoring inquiry forms are available at the Registration Desk in the upstairs wardroom.
- 14.7 A list of boats that, under instruction 12.2, have been penalized for breaking rule 42 will be posted on the notice board.
- 14.8 Breaches of instructions 16, 18, and 19 will not be grounds for a protest by a boat. This changes rule 60.1(a). Penalties for these breaches may be less than disqualification if the protest committee so decides. The scoring abbreviation for a discretionary penalty imposed under this instruction will be DPI.
- 14.9 On the last scheduled day of racing, a request for reopening a hearing shall be delivered:
 - (a) within the protest time limit if the requesting party was informed of the decision on the previous day;
 - (b) within 30 minutes after the requesting party was informed of the decision on that day.This changes rule 66.
- 14.10 On the last scheduled day of racing, a request for redress based on a protest committee decision shall be delivered no later than 30 minutes after the decision was posted. This changes rule 66.

15 SCORING

- 15.1 Three races are required to constitute a series.
- 15.2 29er, Laser, Laser Radial and 420 classes: when fewer than 5 races have been completed, a boat's series score will be the total of her race scores. When 5 or more races have been completed, a boat's series score will be the total of her races scored excluding her worst score. There will be a maximum of 8 races.

HALIFAX

The **BINNACLE**
binnacle.com





15.3 Optimist: when fewer than 5 races have been completed, a boat's series score will be the total of her race scores. When 5 or more races have been completed, a boat's series score will be the total of her races scored excluding her worst score. There will be a maximum of 10 races.

16 SAFETY REGULATIONS

16.2 Before their first race of the day, each boat shall sail on starboard tack across the stern of the RC signal boat and hail their sail number and receive acknowledgement. Each boat shall stay clear of the stern after checking in.

16.1 A boat that retires from a race shall notify the race committee as soon as possible.

17 REPLACEMENT OF CREW

17.1 Substitution of competitors requires prior written approval of the race committee.

18 SUPPORT BOATS

18.1 Team leaders, coaches and other support personnel shall stay outside areas where boats are racing from the time of the preparatory signal for the first class to start until all boats have finished or retired or the RC signals a postponement, general recall, or abandonment. Except in responding to safety concerns, support boats shall maintain a distance of at least 50m from any competitor and shall not interfere with the functions of the RC or Jury boats. Penalties may be applied to the support boat or its associated competitor boat(s) at the discretion of the protest committee.

18.2 Support boats shall be marked with an orange ribbon and are required to carry a marine VHF radio tuned to the required frequency and are required to be available in case of emergency.

18.3 Support boats who shuttle competitors between the marina and the race courses shall continue to shuttle other competitors until all competitors are in their respective race areas.

18.4 Except in an emergency, a boat shall neither make radio transmissions while racing nor receive radio communications not available to all boats. This restriction also applies to mobile phones and other devices capable of receiving email, text or other electronic forms of communication.

COURSE	CHANNEL
ALPHA	71
BRAVO	72
GREEN	69

HALIFAX

The **BINNACLE**
binnacle.com

★ ★ ★ ★
ATLANTICA
HOTELS
WWW.ATLANTICA.TRAVEL


COTTON CANDY


Clearwater


MARTOCK


SCOTIAN SAILS



19 SAIL NUMBERS

- 19.1 Sail numbers shall be legible and shall match those on the boat's registration form. This constitutes prior warning under Rule G4. Boats whose sail numbers do not correspond to those at registration will not be scored.
- 19.2 In the event that duplicate sail numbers are registered for the Laser and Laser Radial classes, the Race Committee may require one of the numbers to be changed before racing. Priority will be given to preserving hull and sail number matches.

20 PRIZES

Prizes will be awarded to 1st, 2nd, and 3rd place in all open classes. Sail Nova Scotia will provide awards for the Nova Scotia Under 16 Champions. Other Awards may be provided at the OA's discretion.

21 DISCLAIMER OF LIABILITY

Competitors participate in the regatta entirely at their own risk. See Rule 4, Decision to Race. The Organizing Authority will not accept any liability for material damage, personal injury or death sustained in conjunction with, prior to, during or after the regatta.

22 TRASH DISPOSAL

Boats shall not put trash in the water. Coach boats, Race Committee boats and all other support boats will accept trash.

HALIFAX

The **BINNACLE**
binnacle.com

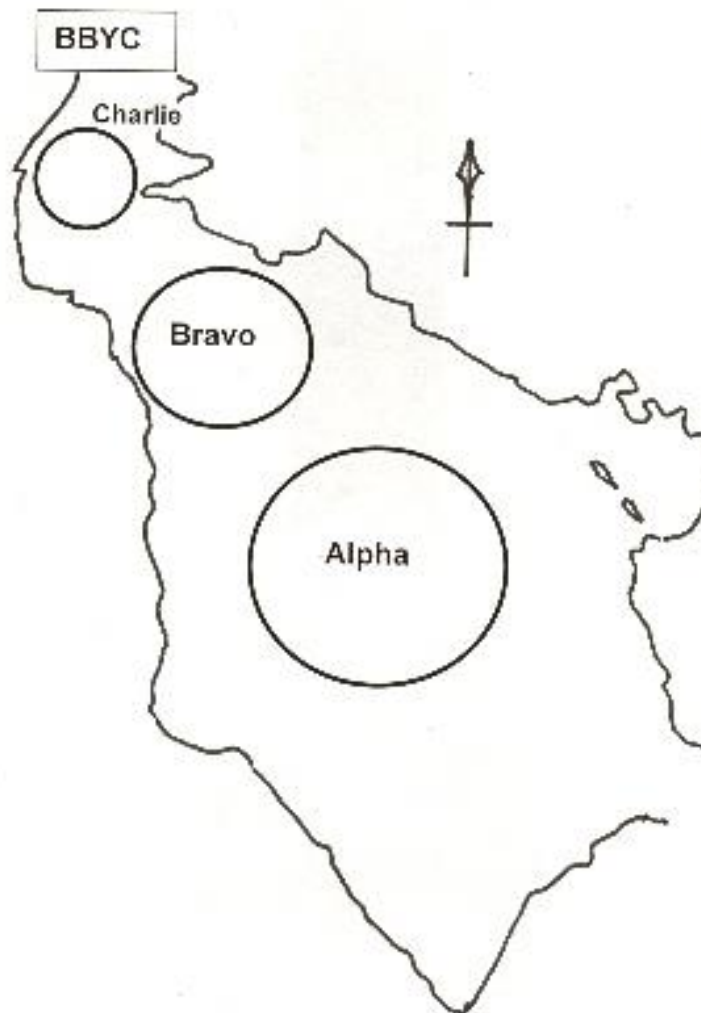




APPENDIX A: RACING AREAS

The diagram below shows the approximate location and size of racing areas in Bedford Basin. Anchored shipping may require locations to vary, but relative positions (Charlie nearest BBYC and Alpha farthest away) will be preserved.

Not for navigation.



HALIFAX

The **BINNACLE**
binnacle.com





APPENDIX B: COURSES

NUMERAL PENNANT ONE (1)

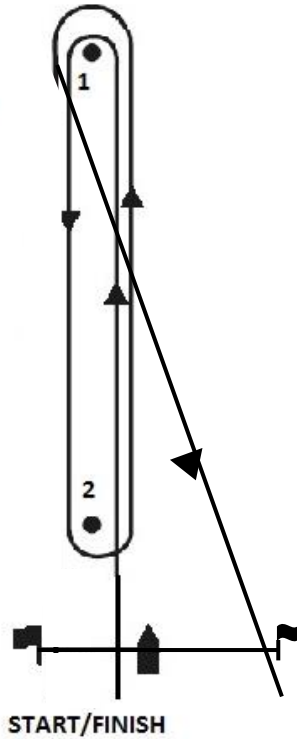
START – 1 – FINISH

NUMERAL PENNANT TWO (2)

START – 1 – 2 – 1 – FINISH

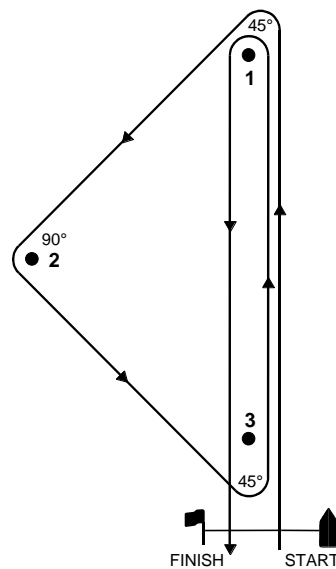
NUMERAL PENNANT THREE (3)

START – 1 – 2 – 1 – 2 – 1 – FINISH



NUMERAL PENNANT FOUR (4)

START – 1 – 2 – 3 – 1 – FINISH



HALIFAX

The **BINNACLE**
binnacle.com

